

ROCKAWAY

OF

TOWNSHIP

SHEET 201

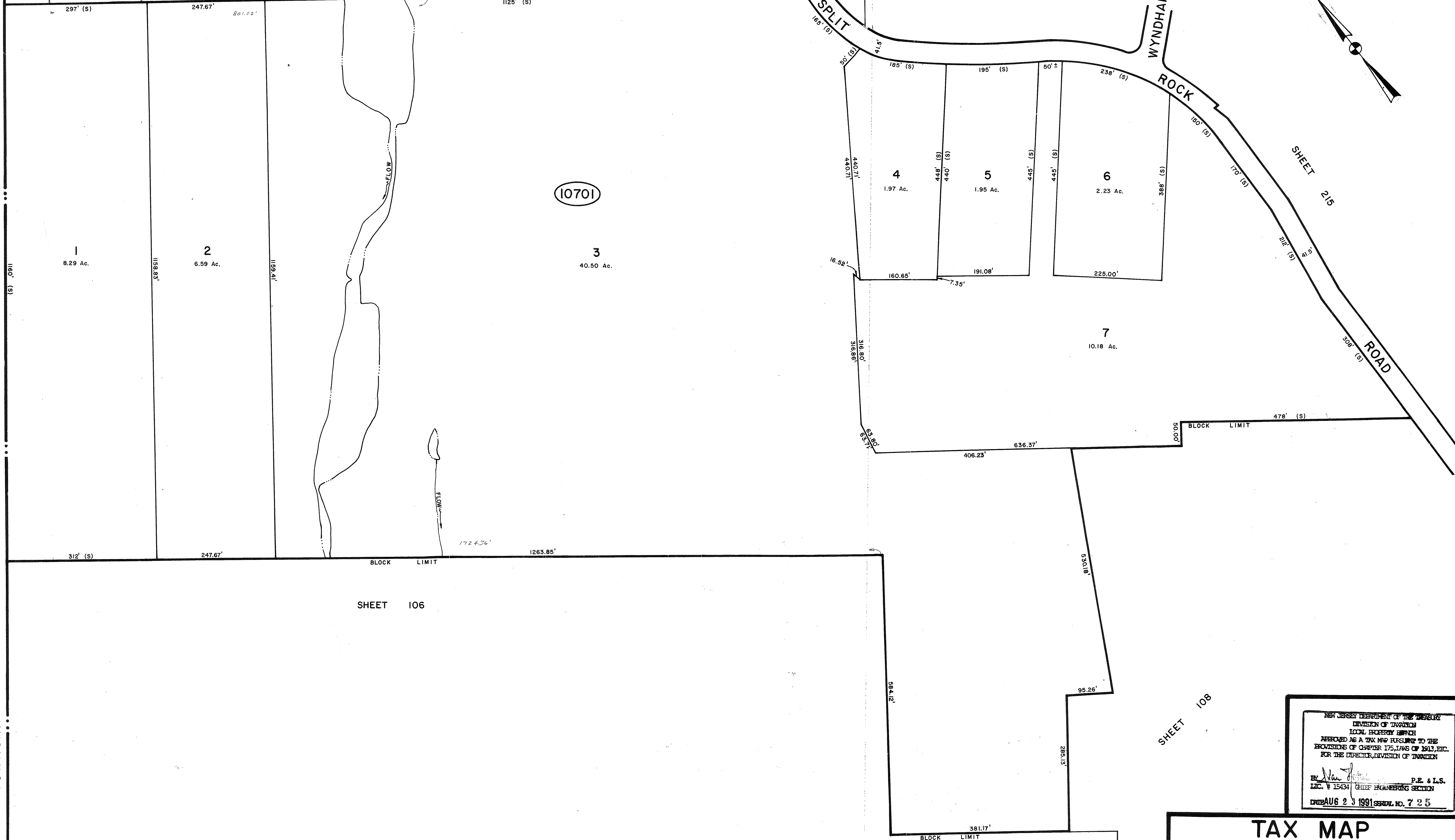
SHEET 215

SHEET 215

SHEET 108

SHEET 106

(10701)



NEW JERSEY DEPARTMENT OF THE TREASURY
 DIVISION OF TAXATION
 LOCAL EXERCISES UNIT
 APPROVED AS A TAX MAP PURSUANT TO THE
 PROVISIONS OF CHAPTER 175, LAWS OF 1912, ETC.
 FOR THE DIRECTOR, DIVISION OF TAXATION

By *Neil J. Edwards* P.E. & L.S.
 LIC. # 15434 CHIEF ENGINEERING SECTION
 DATE AUG 23 1991 SERIAL NO. 7 2 5

TAX MAP
TOWNSHIP OF BOONTON
 MORRIS COUNTY, NEW JERSEY
 SCALE: 1" = 100' JANUARY 1, 1990
LINCOLN H. EDWARDS
 P.E. / L.S. NEW JERSEY LICENSE No. 8892
 COUVRETTE ASSOCIATES INC.
 29 U.S. HIGHWAY 46 • ROCKAWAY, N.J. 07866